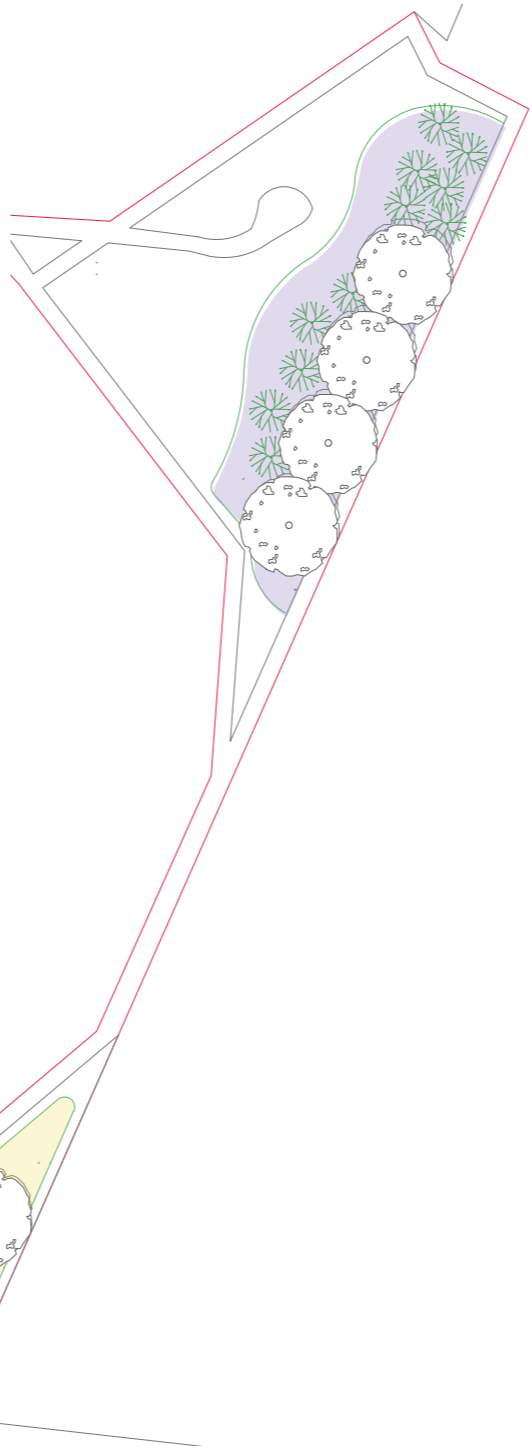
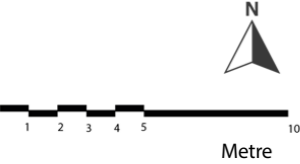


# Dan y Deri Southeast

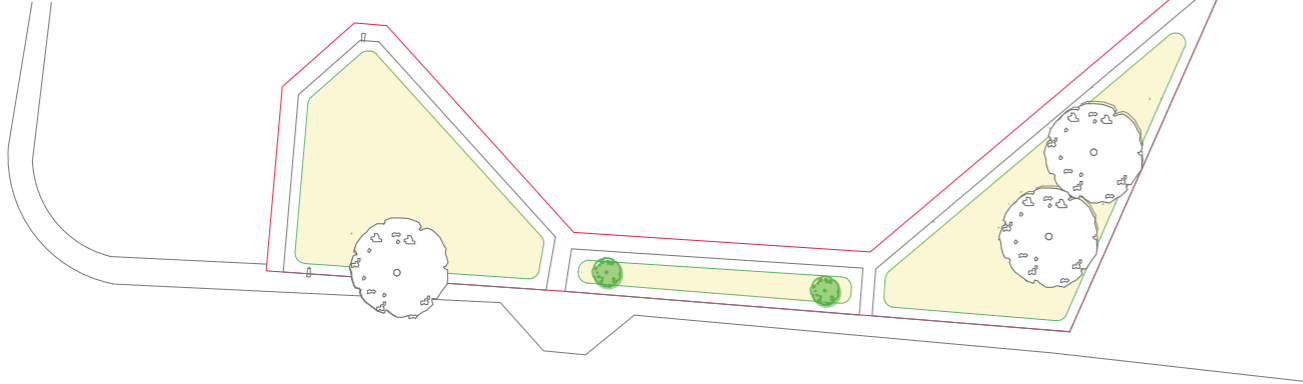
Key

- Wildflower Meadow
- Proposed Tree
- Woodland ground flora and understorey
- Existing Tree



### Street Trees

2 No. Field maple *Acer campestre*. Use standards (10-12cm girth and 3-3.5m tall) planted in square pit minimum 600mm wide and 120mm deeper than rootball. Roughen pit sides and fill pit with sandy loam. Root collar to surrounding soil level. Stake and tie to one third of tree height. Watered within 10 days of planting.



### Woodland Ground Flora and Understorey Planting

Ground surface to be lightly cultivated and planted with the No. 20 shrubs, supplied as whips (<1m in height) or similar and planted randomly across area on drawing. Whips to be protected by biodegradable guards and supported with canes. Edge of area where mowing to cease to be marked by wooden stakes. Area to be seeded with woodland wildflowers Emorsgate EW1F Wild Flowers for Woodland (1kg) – or alternative approved in writing by the Council - to be mixed with sand to make sowing easier.

Common Name	Scientific Name	Native to the UK?	Size	No. of Plants
Guelder rose	<i>Viburnum opulus</i>	Yes	>1m	5
Hazel	<i>Coryllus avellana</i>	Yes	>1m	5
Dogwood	<i>Cornus sanguinea</i>	Yes	>1m	5
Goat willow	<i>Salix caprea</i>	Yes	>1m	5

### Wildflower Meadow

Grass mowing to be relaxed to single annual cut with cutting removed, apart from 500mm wide margins to be cut regularly to maintain tidy appearance. Total of No 100 wildflower plugs to be planted in random locations across verges in autumn/spring. To be supplied by Celtic Wildflowers (or approved alternative). <https://celticwildflowers.co.uk/>

Common Name	Scientific Name	Native to the UK?	No. of Plants
Ox eye daisy	<i>Leucanthemum vulgare</i>	Yes	25
Birds Foot Trefoil	<i>Lotus corniculatus</i>	Yes	25
Common knapweed	<i>Centaurea nigra</i>	Yes	25
Field scabious	<i>Knautia arvensis</i>	yes	25

Prepared by The GIC on behalf of Monmouthshire County Council  
 Contact: gary@thegic.com

Date of Issue: 231123  
 GIC\_0001101

