

# Dan y Deri Islands

## Island 1

### Native Hedges

Two native hedges to be planted by excavating trench planting with staggered double row of 4 whips (<1m in height) per linear metre. Whips to be secured with canes and protected with biodegradable guards. Planting to be mulched with tree bark. Hedge to have annual trim once established.

#### West Hedge

Common Name	Scientific Name	Native to the UK?	Size	No. of Plants
Dogwood	<i>Cornus sanguinea</i>	Yes	>1m	9
Holly	<i>Ilex aquifolium</i>	Yes	>1m	9
Hazel	<i>Corylus avellana</i>	Yes	>1m	9
Guelder rose	<i>Viburnum opulus</i>	Yes	>1m	9

#### South Hedge

Common Name	Scientific Name	Native to the UK?	Size	No. of Plants
Dogwood	<i>Cornus sanguinea</i>	Yes	>1m	14
Holly	<i>Ilex aquifolium</i>	Yes	>1m	14
Hazel	<i>Corylus avellana</i>	Yes	>1m	14
Guelder rose	<i>Viburnum opulus</i>	Yes	>1m	14

### Wildflower Plug Planting

Volunteers to plant wildflower plugs in grassland in north-eastern section (marked on plan) as follows:

Grass mowing to be relaxed to single annual cut with cuttings removed, Total of No 40 wildflower plugs to be planted in random locations across verges in autumn/spring. To be supplied by Celtic Wildflowers (or approved alternative). <https://celticwildflowers.co.uk/>

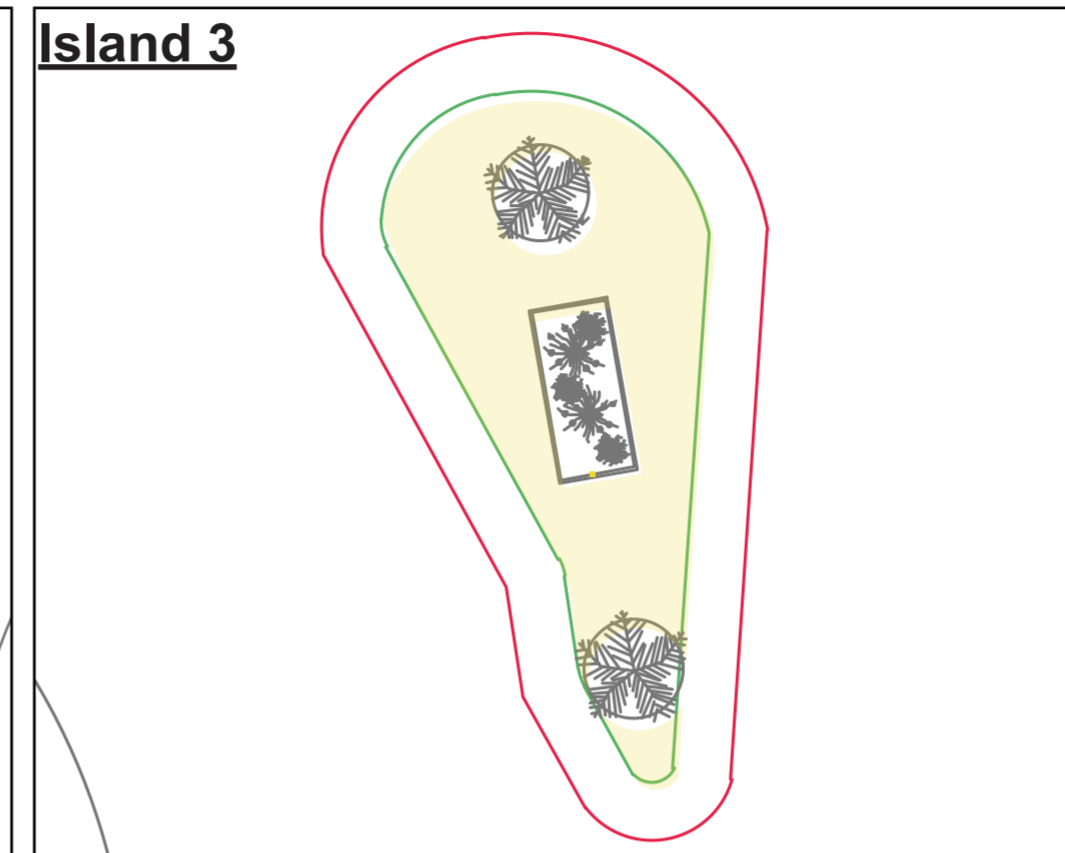
Common Name	Scientific Name	Native to the UK?	No. of Plants
Ox eye daisy	<i>Leucanthemum vulgare</i>	Yes	10
Birds Foot Trefoil	<i>Lotus corniculatus</i>	Yes	10
Common knapweed	<i>Centaurea nigra</i>	Yes	10
Field scabious	<i>Knautia arvensis</i>	Yes	10

## Island 2

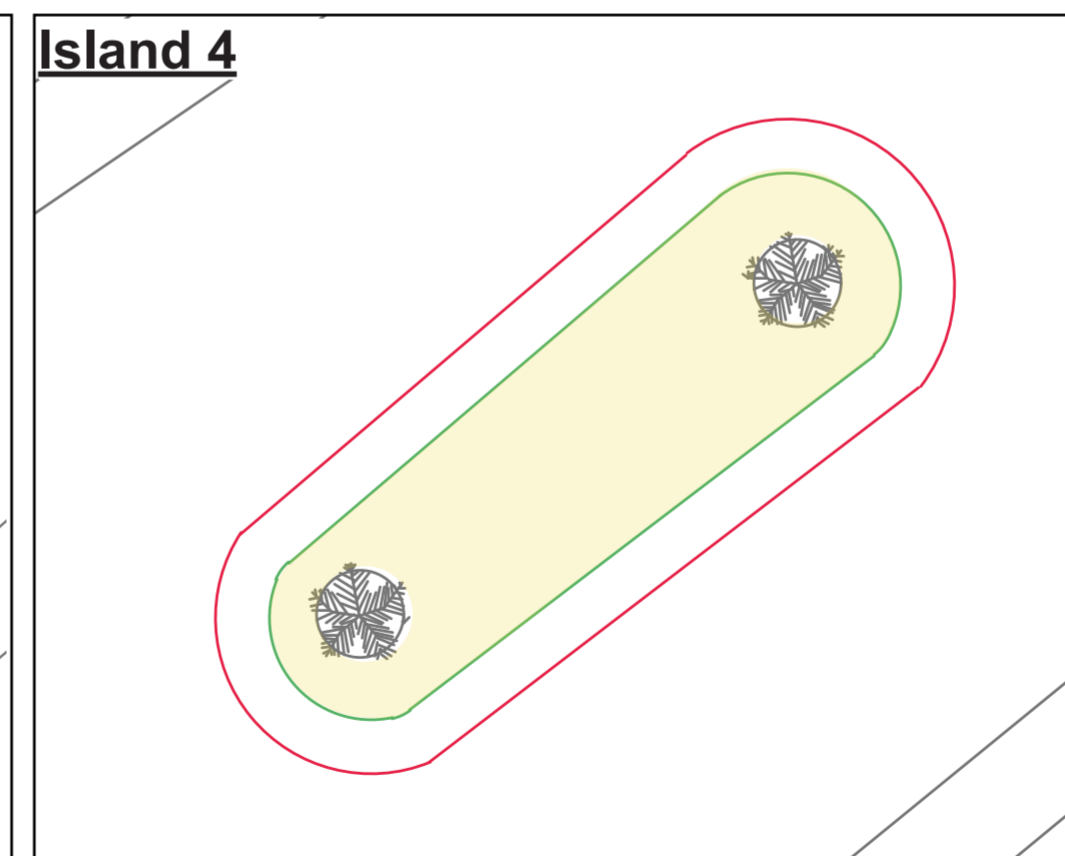
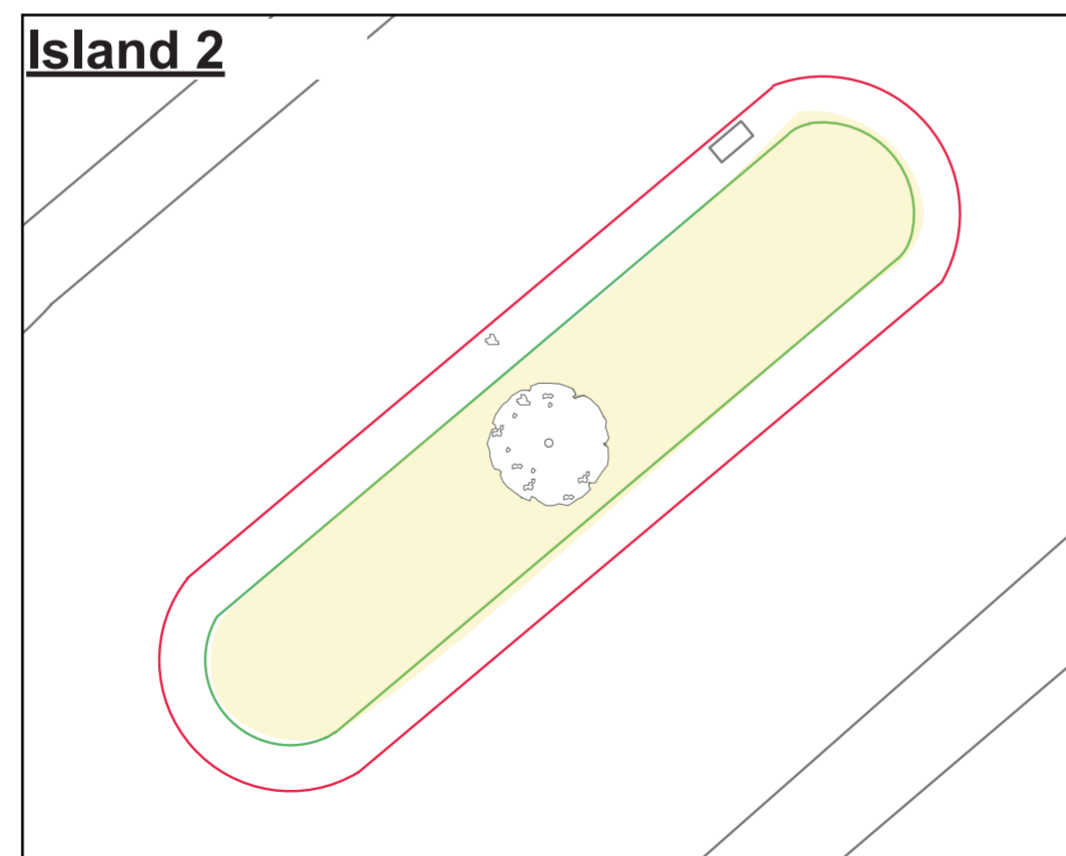
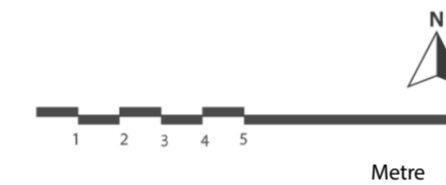
### Wildflower Meadow

Grass mowing to be relaxed to single annual cut with cutting removed, apart from 500mm wide margins to be cut regularly to maintain tidy appearance. Signs to be made (by local school?) explaining project. Total of No 100 wildflower plugs to be planted in random locations in autumn/spring. To be supplied by Celtic Wildflowers (or approved alternative). <https://celticwildflowers.co.uk/>

Common Name	Scientific Name	Native to the UK?	No. of Plants
Ox eye daisy	<i>Leucanthemum vulgare</i>	Yes	25
Birds Foot Trefoil	<i>Lotus corniculatus</i>	Yes	25
Common knapweed	<i>Centaurea nigra</i>	Yes	25
Field scabious	<i>Knautia arvensis</i>	Yes	25



Key  
■ Proposed Native Hedge  
■ Wildflower Meadow  
■ Existing Bench



## Island 3

### Wildflower Meadow

Grass mowing to be relaxed to single annual cut with cutting removed, apart from 500mm wide margins to be cut regularly to maintain tidy appearance. Signs to be made (by local school?) explaining project. Total of No 100 wildflower plugs to be planted in random locations in autumn/spring. To be supplied by Celtic Wildflowers (or approved alternative). <https://celticwildflowers.co.uk/>

Common Name	Scientific Name	Native to the UK?	No. of Plants
Ox eye daisy	<i>Leucanthemum vulgare</i>	Yes	25
Birds Foot Trefoil	<i>Lotus corniculatus</i>	Yes	25
Common knapweed	<i>Centaurea nigra</i>	Yes	25
Field scabious	<i>Knautia arvensis</i>	Yes	25

## Island 4

### Wildflower Meadow

Grass mowing to be relaxed to single annual cut with cutting removed, apart from 500mm wide margins to be cut regularly to maintain tidy appearance. Signs to be made (by local school?) explaining project. Total of No 100 wildflower plugs to be planted in random locations in autumn/spring. To be supplied by Celtic Wildflowers (or approved alternative). <https://celticwildflowers.co.uk/>

Common Name	Scientific Name	Native to the UK?	No. of Plants
Ox eye daisy	<i>Leucanthemum vulgare</i>	Yes	25
Birds Foot Trefoil	<i>Lotus corniculatus</i>	Yes	25
Common knapweed	<i>Centaurea nigra</i>	Yes	25
Field scabious	<i>Knautia arvensis</i>	Yes	25

