

Gwent CCRA Information Sharing Workshop

Agenda 18th November 2025

9.30 **OVERVIEW** of the Gwent Climate Change Risk Assessment process October 2025 – March 2025

9.40 **WHAT ISSUES WILL BE EXPLORING IN THE CCRA?**

Key messages from the UK Climate Risk Assessment 3 (CCRA3) and previous CCRA3s

10.05 **REACTION & Q&A**

10.25 **EXISTING CLIMATE ADAPTATION ACTIVITY**

Exercise 1 : what strategies, policies, plans, programmes and projects already help to manage climate risk and how?

10.55 **EXPLORING THE CLIMATE ADAPTATION GAP**

Exercise 2: what strategies, policies, plans programmes and projects need more attention on climate risk and why?

11.25 **COMFORT BREAK**

11.35 **DATA SOURCES**

Exercise 3: what data is available to inform our understanding of climate risk and where are the main data gaps?

11.55. **ENGAGING ON CLIMATE RISK**

Exercise 4: key individuals who need to be engaged at each stage of the climate risk assessment.

12.15 **PLENARY & NEXT STEPS**

12.30 **CLOSE**



Aim of the workshop

share our understanding of the breadth of risks that need to be considered as the climate changes.

explore what is already being done to get us ready for climate change, related to infrastructure; natural environment; community; and the local economy.

identify data already available to help us understand the breadth and severity of risks and also gaps in our knowledge.

begin to uncover the critical risks in specific locations across Gwent

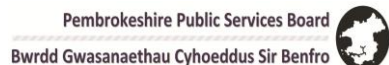


Gwent CCRA Information Sharing Workshop

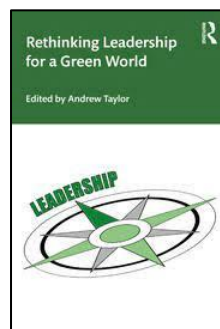
Climate risk experience we are bringing in



**Dr Alan
Netherwood**



Parc Cenedlaethol Arfordir Penfro
Pembrokeshire Coast National Park



NETHERWOOD

SUSTAINABLE FUTURES

Sustainability Governance Policy Practice



working together on climate risk



Dafydd Thomas



Usk NMB
Clwyd NMB



Gwent CCRA Information Sharing Workshop

Gwent CCRA **Project Overview**



WP1
INFORMATION SHARING
Oct – Nov 2025

Desk-based Research

Communications Plan

Gwent-wide Information Sharing Workshop

Climate Leadership Seminar 1

WP1 Briefing: What have we learnt about climate risk and adaptation from information sharing?

WP2
EXPLORING CLIMATE RISKS GWENT WIDE:
Nov-Dec 2025

4 themed expert half day **surgeries** – online using CCRA3 and Met Office Data

Infrastructure Natural Resources Economy Community

Engaging officers from Blaenau Gwent Caerphilly Monmouthshire Newport Torfaen

WP2 Briefing: What have we learnt from exploring area-wide risks?

WP3
COMMUNITY CLIMATE RESILIENCE
Jan-Feb 2026

5 half day face to face '**community workshops**' to ground-truth expert views community workshops 1 in each local authority area

5 Deep –dive case study workshops (places; interests; issues; people with affected parties (face to face, hybrid and online tbd)

WP3 Briefing What have we learnt from engaging the community on climate risk?

WP4
LEADERSHIP TO ADDRESS CLIMATE RISKS
Feb-March 2026

Climate Leadership Seminar 2

- priorities
- arenas and activities to influence
- evidence needs

Climate Leadership Seminar 3

- strategic, operational, institutional, community responses
- engaging affected communities
- corporate working
- governance
- resources

WP4 Briefing: What have we learnt about engaging leadership on climate risk?

WP5
MOVING FROM CLIMATE RISK ASSESSMENT TO ADAPTATION
March 2026

CCRA Technical Report including

Synthesis and analysis of material emerging from WP1-WP4

Narratives on key risks

Narratives on Deep dives

Reflections on Leadership

Advisory recommendations :

Priorities for Adaptation 2026-2031

CCRA Summary Report (Web-based Public Facing

Gwent CCRA Information Sharing Workshop

Learning from CCRAs elsewhere

Climate risks are inevitable and need planning for now



We can expect by mid-century (next 2 decades)

- warmer and wetter winters
- hotter and drier summers
- high variability of extreme weather
- increase our exposure to weather-related hazards:
- increased frequency and intensity of wildfire.



“The UK is strikingly unprepared for the impacts of the climate crisis”

UK Climate Change Committee April 2023

We can also expect

- increases in average and extreme temperatures, in winter and summer.
- flooding and water scarcity (drought)
- increased coastal flooding and erosion from sea level rise
- sea temperature rise and ocean acidification.

After 2050, the extent of further climate change will depend on future global emissions of greenhouse gases.

If the world cuts emissions rapidly to Net Zero, there is a good chance of limiting global temperature increase to below 2°C.

If not, we will see higher levels of warming and much more extreme impacts.

See CCRA3: Wales Summary Report

<https://www.ukclimaterisk.org/wp-content/uploads/2021/06/CCRA-Evidence-Report-Wales-Summary-Final.pdf>

Met Office modelling *averages* for **Newport** in a 2°C scenario (4°C)

Winter (averages)

Precipitation +12% (+26%)

Temperature +1.3 °C (2.7)

Summer (averages)

Precipitation -16% (-36%)

Temperature + 2 °C (4.5)



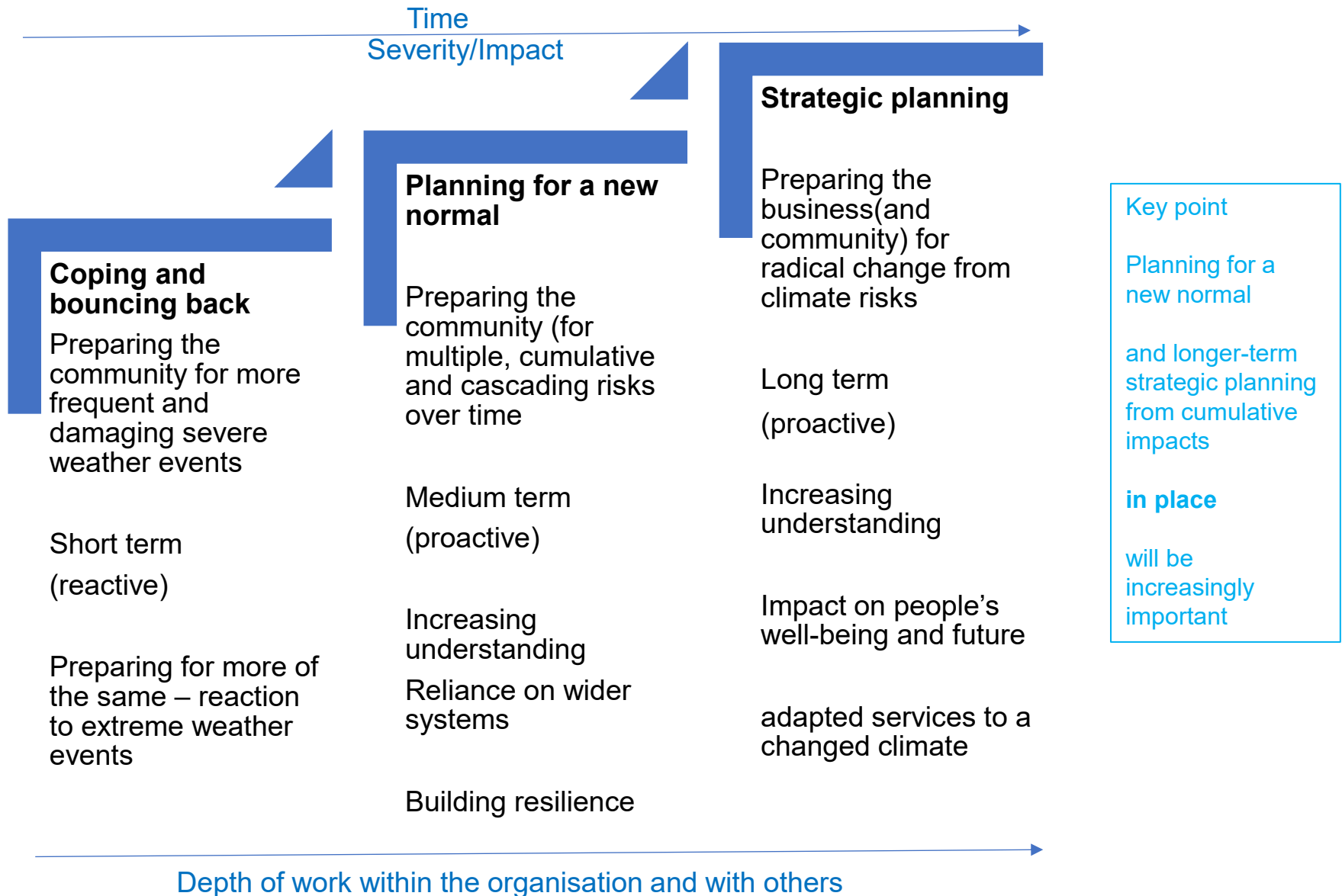
Sea Level rise 27-45 cm

(88 cm by 2080s) – may be more extreme

AMOC (Atlantic Current)

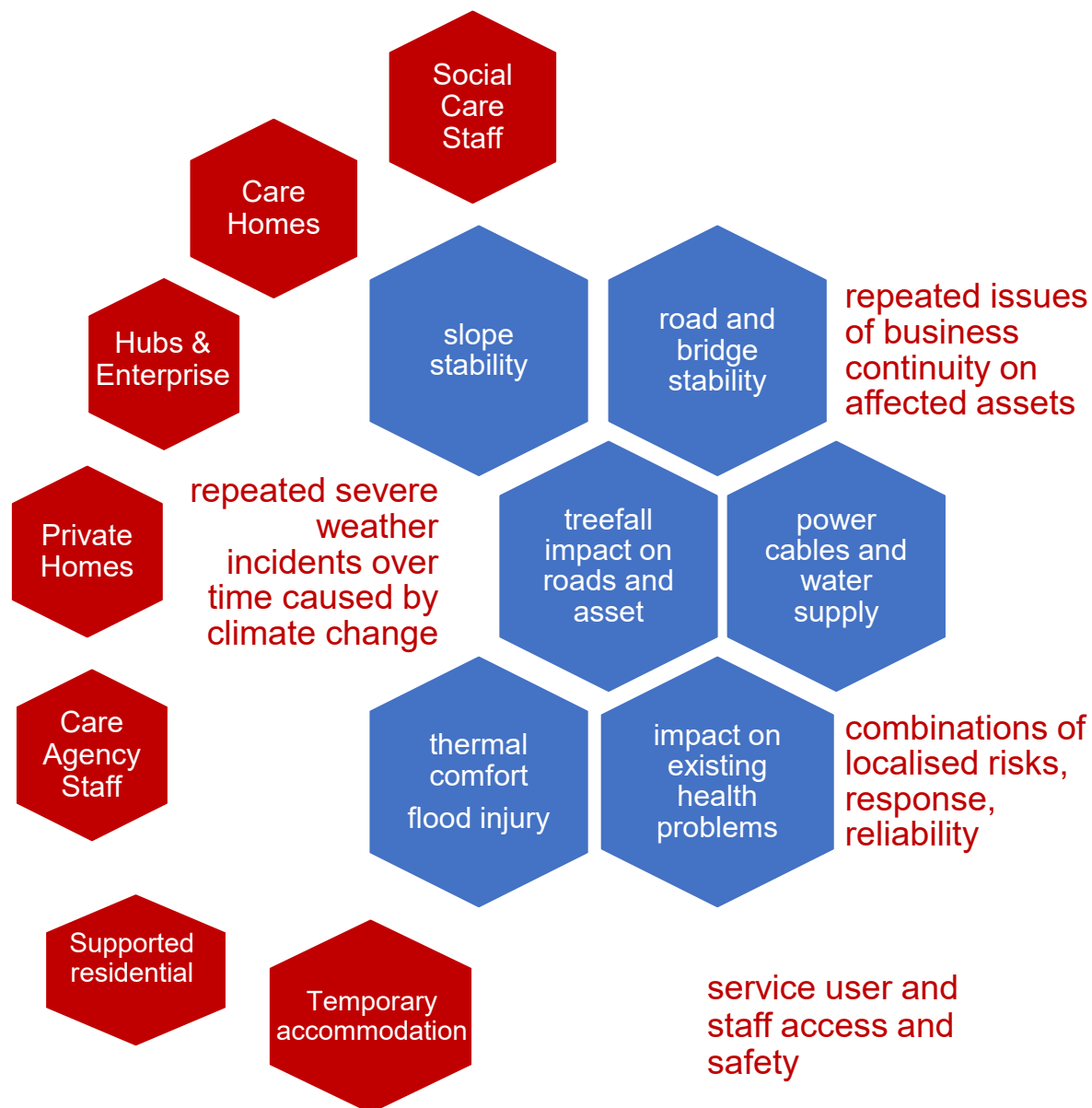
Climate risk is not about individual severe weather events – it's about increased frequency, severity, unpredictability and impact

Different climate risks are complex and combine in 'place' and are cumulative



Gwent CCRA Information Sharing Workshop

We need to think about ripple effects across silos



Key point

Reductionism
can be a major
risk in itself

needs systemic
thinking

Gwent CCRA Information Sharing Workshop
Organisations often use the UK Climate Risk Assessment (CCRA3)
as a major focus of their investigation of risk

| NATURAL ENVIRONMENT & ASSETS | INFRASTRUCTURE | HEALTH COMMUNITIES & BUILT ENVIRONMENT |
|---|---|--|
| N1. Terrestrial species and habitats | I1. Infrastructure networks (water, energy, transport ICT) | H1. Health and wellbeing (temperatures) |
| N2. Terrestrial species and habitats (INNS) | I2. Infrastructure services (riverine) | H3. People, communities and buildings (flooding) |
| N4. Soils | I3. Infrastructure services (coastal) | H4. Viability of coastal communities (sea level) |
| N7. Agriculture | I4. Bridges and pipelines | H5. Building fabric |
| N8. Forestry | I5. Transport networks | H7. Health and wellbeing (air quality) |
| N10. Aquifers and agricultural land | I6. Hydroelectric generation | H8. Health (vector borne disease) |
| N11. Freshwater species and habitats | I7. Subterranean and surface infrastructure | H9. Food safety and food security |
| N12. Freshwater species and habitats (INNS) | I8. Public water supplies | H10. Health (house water supply) |
| N14. Marine species, habitats and fisheries | I9. Energy generation | H11. Cultural heritage |
| N16. Marine species and habitats | I10. Energy | H12. Health and social care delivery |
| N5. Natural carbon stores, carbon sequestration | I11. Offshore infrastructure | H13. Education and prison services |
| N6. Agricultural and forestry productivity | I12. Transport | Opportunities |
| N17. Coastal species and habitats | I13. Digital | H2. Health and wellbeing (high temperatures) |
| N18. Landscape character | BUSINESS & INDUSTRY | H6. Household energy demand |
| Opportunities | B1. Flooding of business sites | INTERNATIONAL DIMENSIONS |
| N3. New species | B2. Coastal business locations and infrastructure | ID1. Food availability, safety, and quality |
| N9. Agricultural and forestry productivity | B3. Business production processes | ID3. Migration |
| N13. Freshwater species and habitats | B4. Business access to finance, investment, insurance | ID4. The UK's international interests and responsibilities |
| N15. Marine species, habitats and fisheries | B5. Reduced employee productivity in businesses | ID5. Changes to international governance affecting the UK |
| | B6. Supply chains and distribution networks | ID7. International trade routes |
| | B7. Changes in demand for goods and services | ID8. Risk to the UK Financial Sector |
| | | ID9. Risks to Public Health from Overseas |
| | Priority risks for service | ID10. Risk multiplication to the UK |
| | Broader risks impacting on service | Opportunities |
| | Risks from support 'systems' | ID2. UK food availability and exports |
| | | ID6. Increased trade for the UK |

CCRA3 can help us to
identify broad risks to focus
on and interpret at service
and locality level

Key point

using
CCRA3 risk
categories can
be clunky at a
local level

it's meant for
governments
and nations not
organisations
and services

An entry point
to consider
risks

In our
SURGERIES

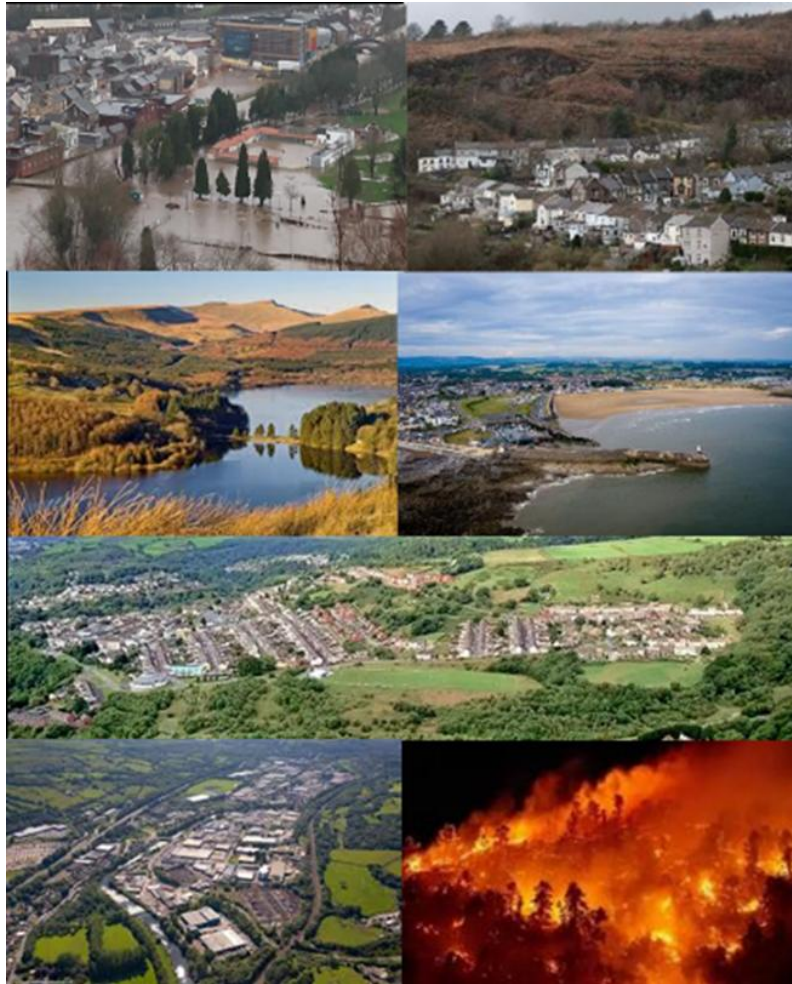
Gwent CCRA Information Sharing Workshop

Cwm Taf Morgannwg CCRA:

Lessons for Gwent

These are the 11 priorities you should be concerned about 2025-30 and beyond

- A. Post-industrial landscape (multiple risks at scale)
- B. Climate resilient communities
- C. Infrastructural pinch points
- D. Transport Infrastructure (road, rail, bridge)
- E. Wildfire management
- F. Asset management
- G. Social care and health provision
- H. Maintaining utilities (energy, water, sewerage, food, ICT)
- I. Nature conservation management
- J. Institutional responses to climate risk
- K. Resources and finance for climate adaptation



Key learning points

combinations of risks makes this a complex issue for public organisations and their partners

climate risk not just an operational issue to be dealt with within silos

It involves multiple institutions

working at different spatial levels

in different locations

different types of working than at present

- partnership
- strategic
- institutional
- operational

We need to engage with the complexity.

This is what today is about.

INFRASTRUCTURE

- 1 - Roads & Highways Network
- 2- Energy Network
- 3 - Land Stability
- 4 - Port & Harbours
- 5- Water & Sewerage
- 6 - Pipelines & Cables Network
- 7 - Information technology
- 8 - Rail Network
- 9- Climate Adaptation Evidence Hub

NATURE & AGRICULTURE

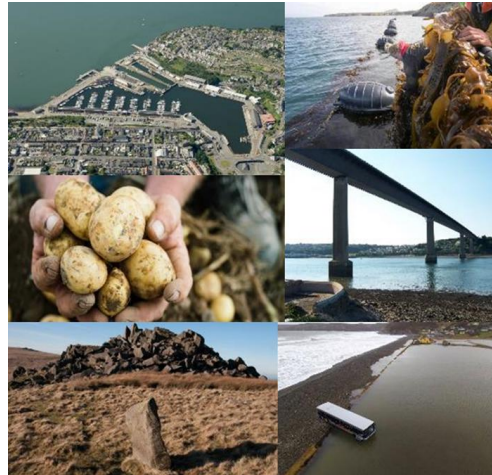
- NA1 - Designated Sites and Landscapes
- NA2 - Landscapes
- NA3 - Soil Resources
- NA4 - Saltmarsh & Seagrass
- NA5 - Coastal Land Management

COMMUNITIES

- CM1 -Climate risk and Communities protocol
- CM2 -Community climate adaptation groups
- CM3 -Climate risk to Health and Social Services
- CM4- Wildfires in a changed climate
- CM5- Heritage Assets in a changed climate

BUSINESS AND INDUSTRY

- BI 1 - Tourism Business Climate Risk Support
- BI 2 - Agri -Business Climate Risk Support
- BI 3 - Fishing Climate Risk Support
- BI 4 - Business & Industrial Assets
- BI 5 -Water Resources & future economy.



Key learning points

inter-reliances

private sector interest

knowledge gaps

tapping institutional knowledge

communities of interest

Pembrokeshire Public Services Board
Bwrdd Gwasanaethau Cyhoeddus Sir Benfro



UK Government
Llywodraeth y DU

This project is funded by the UK Government
through the UK Community Renewal Fund

Climate Risks to Adult Social Services Users

impacts on service users from increasing number of severe weather events (wherever they receive the service)

immediate risks in response to each event

- thermal comfort
- flood protection
- storm protection
- supplies
- staff access
- air quality
- managing existing health problems

cumulative risks

- mental health (anxiety and depression)
- exacerbating existing health problems
- population displacement
- staff capacity/morale

Climate Risk to support systems for Adult Social Services

resilience of infrastructural networks supporting on-site service delivery in multiple locations and contexts

- road and bridge networks
- digital networks
- public water supply
- energy networks
- supply networks
- combined risks (e.g. storm damage, flood, slope stability combine)
- cascading risks (e.g. energy outage causes IT and water supply failure)

Key learning point

We can use different lenses to think about risk.

this will help us to communicate to multiple audiences

Climate Risk to Assets where Adult Social Services are delivered

repeated and enhanced severe weather impacts on individual assets, resilience, vulnerabilities, business continuity and cost implications

- flood damage
- power outages
- storm damage to building fabric
- interrupted IT connectivity
- compromised water supply
- impeded access to assets for staff
- vulnerability of local emergency response assets

Systemic risks to Service Planning from Climate Change

broader factors that combine with climate risks to stretch service delivery

- cumulative costs of recovery and bounce back
- resilience of supply chains service
- providers ability to manage risks
- availability of goods needed to deliver the service
- limited contingency in existing systems (e.g. temporary accommodation)
- seasonal impact from visitor economy
- staff morale/ capacity/ safety/burnout
- impacts of climate migration (UK and overseas)

Pembrokeshire Coastal Path National Trail - Climate Risks

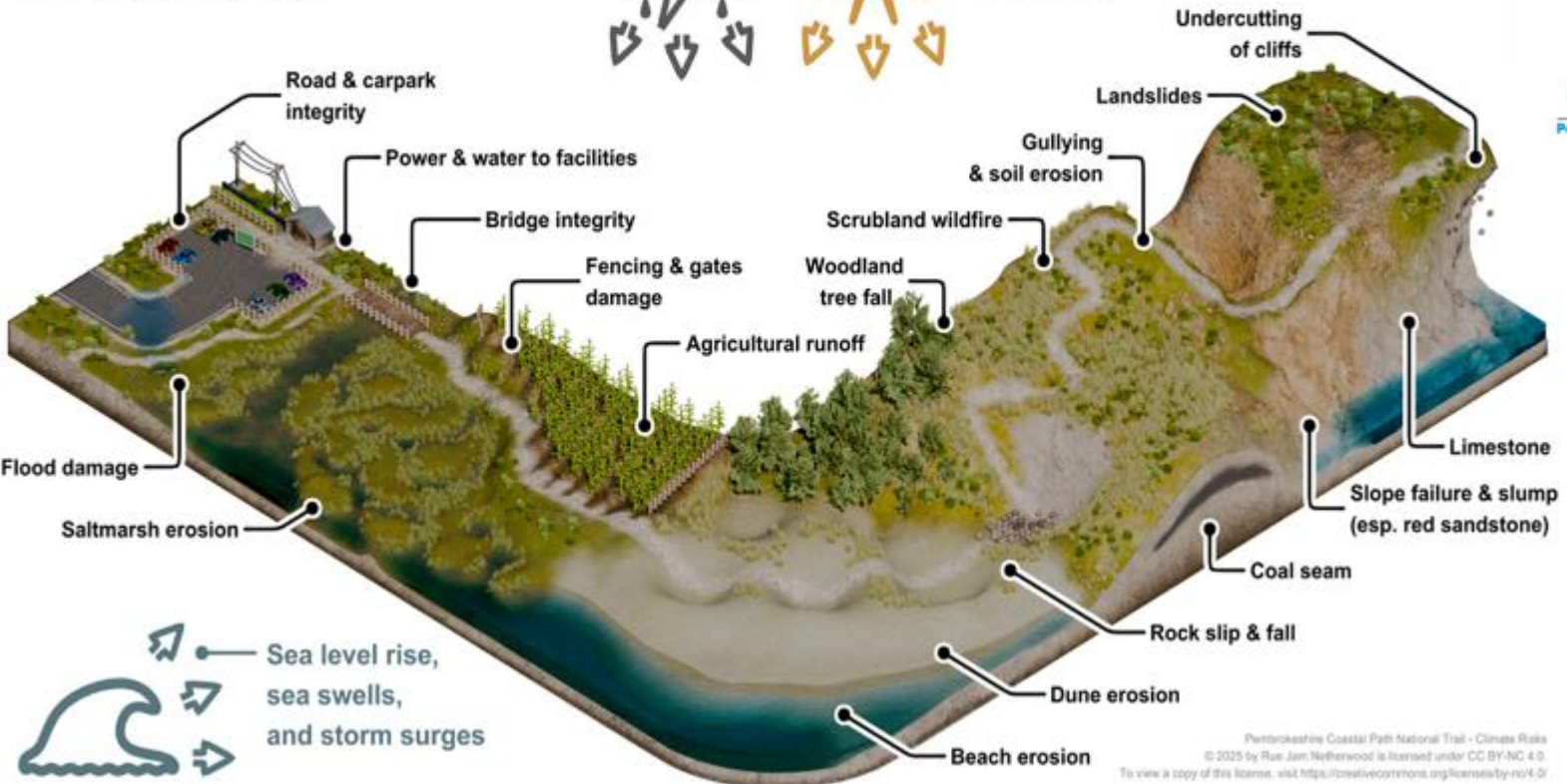
Increased intense rainfall & storm frequency

- Water ingress on trail
- Wind damage to infrastructure



Extended periods of heat and drought

- Increased risk of wildfire
- Trail drying



Key learning

Granularity needed at a place-based level from combinations of risks. **Informed by local knowledge.**

INFRASTRUCTURE

Risks that often emerge from CCRA

Road condition

Slope condition

Bridge condition

Built assets and surrounding infrastructure

Energy infrastructure and networks (above and below ground)

Water infrastructure

Pipelines, cables, networks

IT infrastructure

River flood defence

Rail infrastructure

Post Industrial – spoil tips, subsidence, dispersed pollution

Waste facilities (including historical landfill)

Emergency response assets

Coastal flood defence



COMMUNITIES

Risks that often emerge from CCRA

thermal comfort for the vulnerable
access to health facilities
business continuity for social services
storm damage to housing stock
repeated flood damage (financial and insurance impacts)
mental health impacts (all ages)
air quality from wildfire and heatwave
damage to historic assets
access to work/workforce
water supply
food supply – continuity
development blight
local authority service business continuity and finance
long term community feasibility



designated sites – species and habitats

wildfire (woodland, heath, peat)

soil loss and mineralisation

agricultural production

forestry production

tree loss – disease – windfall

water quality in rivers and lakes

water supply

coastal erosion

river erosion

peatland erosion

invasive species

reservoir stability

canal stability

dispersed pollution (contaminated land, minewater, historic landfill)

ecological connectivity



resilience of premises
(business and industrial
parks)

production processes
(heat)

transport networks

product supply networks

business insurance

clean- up costs

workforce access

water, energy, IT networks

access to finance

location/cost decisions

agricultural output (food)

tourist offer (sites and
activities)

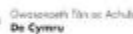
port/harbour infrastructure

overseas supply chains



Gwent CCRA Information Sharing Workshop

Climate risk management is core to present and future service delivery in a continually changing climate



managing the consequences of climate impacts and associated risks in communities

planning strategically for a different future climate

integrating climate risks into the way the organisation plans and delivers

place shaping –through regeneration and planning

engaging at risk communities – from resilience to existence

operationally in **adapting services** to a new climate

political representation of current and future generations

financially in sound investment in infrastructure

ethically in not 'kicking the can down the road' for communities and successors

Gwent CCRA Information Sharing Workshop

Our plan is to build up a picture of risk across Gwent and identify priorities for climate adaptation



WP1 INFORMATION SHARING Oct – Nov 2025

Desk-based Research

Communications
Plan

Gwent-wide
Information Sharing
Workshop

Climate Leadership Seminar 1

WP1 Briefing: What
have we learnt about
climate risk and
adaptation from
information sharing?

WP2 EXPLORING CLIMATE RISKS GWENT WIDE: Nov-Dec 2025

4 themed expert half
day **surgeries** –
online using CCRA3
and Met Office Data

Infrastructure Natural Resources Economy Community

Engaging officers
from
Blaenau
Gwent
Caerphilly
Monmouthshire
Newport
Torfaen

WP2 Briefing: What
have we learnt from
exploring area-wide
risks?

WP3 COMMUNITY CLIMATE RESILIENCE Jan-Feb 2026

5 half day face to
face '**community**'
workshops to
ground-truth expert
views
community
workshops 1 in
each local authority
area

5 **Deep –dive case
study workshops**
(places; interests;
issues; people with
affected parties
(face to face, hybrid
and online tbd)

WP3 Briefing What
have we learnt from
engaging the
community on
climate risk?

WP4 LEADERSHIP TO ADDRESS CLIMATE RISKS Feb-March 2026

Climate Leadership Seminar 2

- **priorities**
- arenas and
activities to
influence
- evidence needs

Climate Leadership Seminar 3

- strategic,
operational,
institutional,
community
responses
- engaging affected
communities
- corporate working
- governance
- resources

WP4 Briefing: What
have we learnt
about engaging
leadership on
climate risk?

WP5 MOVING FROM CLIMATE RISK ASSESSMENT TO ADAPTATION March 2026

CCRA Technical Report including

Synthesis and
analysis of
material emerging
from WP1-WP4

Narratives on key
risks

Narratives on
Deep dives

Reflections on
Leadership

**Advisory
recommendations**

**Priorities for
Adaptation 2026-
2031**

**CCRA Summary
Report** (Web-
based Public
Facing

1. What stood out
from the
presentation for
you?

2. What seems
critical?

Xleap input

Discussion



EXPLORING EXISTING ACTIVITY

What strategies, policies, plans, programmes and projects already help to manage climate risk and how?

SHAPING PLACES & DEVELOPMENT

Local Development Plans

Town Regeneration Plans

Place –making Plans

Asset/Property Management Plans

Housing Delivery Plans

Strategic Flood Consequences Assessments

Flood Risk Management Plans

National Technical Advice Notes (TANs)

Others?

SERVING COMMUNITIES

Local Resilience Forum and Plans

Corporate Plans of Public Bodies

Corporate Plans of Utilities

Climate Assemblies and Community Champions

Community Flood Networks

Social Service Plans

Heatwave Action Plans

Neighbourhood Plans

Third Sector Projects?

Community Projects?

MANAGEMENT OF NATURAL RESOURCES

Green Infrastructure Strategy

Gwent Green Grid Partnerships

Nature Recovery Plans

Regional

- Shoreline Management
- Water Catchment Management
- River Basin Management
- SE Wales Area Statement

SE Wales Resilient Uplands Project

Greater Gwent Nature Recovery Plan

Tree & Woodland Strategies

Wye Valley AONB Plan

Gwent Levels Plan

INFRASTRUCTURAL INVESTMENT

Cardiff Capital Region Projects (Northern Valleys Initiative Challenge Fund

CJC Strategic Development Plan

CJC Transport Plan

WG Infrastructural Investment Project Pipeline

Local Area Energy Plans

Transport for Wales Climate Resilience & Action Plan

Dwr Cymru Water Management Plan

EXPLORING EXISTING ACTIVITY

Exercise 1 : what strategies, policies, plans, programmes and projects already help to manage climate risk and how?

The aim of this exercise is to understand what activities are already underway in the area That might be relevant.

The diagram provides a prompt to get you to think about this across Gwent

What other strategies, policies, plans, programmes and projects should we be aware of in Blaenau Gwent, Caerphilly, Monmouthshire, Newport & Torfaen?

What cross-Gwent initiatives are relevant here?

Gwent CCRA Information Sharing Workshop
EXPLORING EXISTING ACTIVITY
Building a picture of relevant activities which can help us to manage climate risk

SHAPING PLACES & DEVELOPMENT

Local Development Plans

Town Regeneration Plans

Place –making Plans

Asset/Property Management Plans

Housing Delivery Plans

Strategic Flood Consequences Assessments

Flood Risk Management Plans

National Technical Advice Notes (TANs)

Others?

SERVING COMMUNITIES

Local Resilience Forum and Plans

Corporate Plans of Public Bodies

Corporate Plans of Utilities

Climate Assemblies and Community Champions

Community Flood Networks

Social Service Plans

Heatwave Action Plans

Neighbourhood Plans

Third Sector Projects?

Community Projects?

MANAGEMENT OF NATURAL RESOURCES

Green Infrastructure Strategy

Gwent Green Grid Partnerships

Nature Recovery Plans

Regional
• Shoreline Management
• Water Catchment Management
• River Basin Management
• SE Wales Area Statement

SE Wales Resilient Uplands Project

Greater Gwent Nature Recovery Plan

Tree & Woodland Strategies

Wye Valley AONB Plan

Gwent Levels Plan

INFRASTRUCTURAL INVESTMENT

Cardiff Capital Region Projects (Northern Valleys Initiative Challenge Fund

CJC Strategic Development Plan

CJC Transport Plan

WG Infrastructural Investment Project Pipeline

Local Area Energy Plans

Transport for Wales Climate Resilience & Action Plan

Dwr Cymru Water Management Plan

We need to build a picture of current relevant activity to climate risk in Gwent

Xleap input

Discussion

Gwent CCRA Information Sharing Workshop

EXPLORING THE CLIMATE ADAPTATION GAP

Exercise 2 : how might strategies, policies, plans, programmes and projects need to be strengthened to address climate risk?

The aim this exercise is to understand where/how Gwent needs to strengthen its approach to climate risk

The diagram provides a prompt to get you to think about this across Gwent

How can our collective approach be strengthened to deal with the complexity of climate risk?

Gwent CCRA Information Sharing Workshop

EXPLORING EXISTING ACTIVITY

Building a picture of relevant activities which can help us to manage climate risk

SHAPING PLACES & DEVELOPMENT

Local Development Plans

Town Regeneration Plans

Place –making Plans

Asset/Property Management Plans

Housing Delivery Plans

Strategic Flood Consequences Assessments

Flood Risk Management Plans

National Technical Advice Notes (TANs)

Others?

SERVING COMMUNITIES

Local Resilience Forum and Plans

Corporate Plans of Public Bodies

Corporate Plans of Utilities

Climate Assemblies and Community Champions

Community Flood Networks

Social Service Plans

Heatwave Action Plans

Neighbourhood Plans

Third Sector Projects?

Community Projects?

MANAGEMENT OF NATURAL RESOURCES

Green Infrastructure Strategy

Gwent Green Grid Partnerships

Nature Recovery Plans

Regional
• Shoreline Management
• Water Catchment Management
• River Basin Management
• SE Wales Area Statement

SE Wales Resilient Uplands Project

Greater Gwent Nature Recovery Plan

Tree & Woodland Strategies

Wye Valley AONB Plan

Gwent Levels Plan

INFRASTRUCTURAL INVESTMENT

Cardiff Capital Region Projects (Northern Valleys Initiative Challenge Fund

CJC Strategic Development Plan

CJC Transport Plan

WG Infrastructural Investment Project Pipeline

Local Area Energy Plans

Transport for Wales Climate Resilience & Action Plan

Dwr Cymru Water Management Plan

We need to build a picture of current relevant activity to climate risk in Gwent

19

Xleap input in breakout rooms

Discussion

DATA SOURCES

Exercise 3: what data is available to inform our understanding of climate risk and where are the main data gaps?



The aim this exercise is to understand begin to build a picture of data already available to inform the CCRA.

It will also help us to understand data gaps which will need to be filled.

What data might help us think about climate risk in Gwent?

INFRASTRUCTURE

Data available

Data Gaps

NATURAL ENVIRONMENT

Data available

Data Gaps

COMMUNITIES

Data available

Data Gaps

BUSINESS, INDUSTRY ECONOMY

Data available

Data Gaps

Xleap input

Discussion

ENGAGING ON CLIMATE RISK

Exercise 4: key individuals/groups who need to be engaged at each stage of the climate risk assessment.

WP1 INFORMATION SHARING

Oct – Nov 2025

Desk-based Research

Communications
Plan including

Stakeholder Mapping

Workshop Schedule

Information Database

Climate Leadership
Seminar 1 4/11

**Gwent-wide
Information Sharing
Workshop 18/11**

WP1 Briefing: What
have we learnt about
climate risk and
adaptation from
information sharing?

WP2 EXPLORING CLIMATE RISKS GWENT WIDE:

Nov-Dec 2025

4 themed expert half
day **surgeries** –
online using CCRA3
and Met Office Data

Infrastructure 2/12
Nature/Env 9/12
Economy 10/12
Community 4/12

Engaging officers
from LAs utilities,
public bodies, third
sector

WP2 Briefing: What
have we learnt from
exploring area-wide
risks?

WP3 COMMUNITY CLIMATE RESILIENCE

Jan-Feb 2026

5 half day face to face
'**community**'
workshops to
ground-truth expert
views

community workshops
1 in each local
authority area

Dates confirmed

Blaenau
Gwent 20/1
Caerphilly 27/1
Monmouthshire 21/1
Newport 15/1
Torfaen 22/1

5 Deep –dive case study workshops

(places; interests;
issues; people with
affected parties
(face to face, hybrid
and online)

Dates confirmed

Feb 3, 4, 5, 10, 11

WP3 Briefing What
have we learnt from
engaging the
community on climate
risk?

WP4 LEADERSHIP TO ADDRESS CLIMATE RISKS

Feb-March 2026

Climate Leadership Seminar 2

- priorities
- arenas and
activities to
influence

- evidence needs

Date confirmed

25/02

Climate Leadership Seminar 3

- strategic,
operational,
institutional,
community
responses

- engaging affected
communities

- corporate working

- governance

- Resources

Date confirmed

04/03

WP4 Briefing: What
have we learnt
about engaging
leadership on
climate risk?

WP5 MOVING FROM CLIMATE RISK ASSESSMENT TO ADAPTATION

March 2026

CCRA Technical Report including

Synthesis and
analysis of
material emerging
from WP1-WP4

Narratives on key
risks

Narratives on
Deep dives

Reflections on
Leadership

Advisory
recommendations

Priorities for
Adaptation 2026-
2031

**CCRA Summary
Report** (Web-
based Public
Facing

Who needs to be
involved at what
stage?

Gwent CCRA Information Sharing Workshop

PLENARY AND NEXT STEPS

Surgeries, Community Workshops and Deep Dives

The aim this exercise is to understand your initial ideas for the **deep dives** in February

What might be important to consider and who might need to be involved?

WP2

EXPLORING CLIMATE RISKS GWENT WIDE:

Nov-Dec 2025

4 themed expert half day **surgeries** – online using CCRA3 and Met Office Data

Infrastructure 2/12
Nature/Env 9/12
Economy 10/12
Community 4/12

Engaging officers from LAs utilities, public bodies, third sector

WP3

COMMUNITY CLIMATE RESILIENCE

Jan-Feb 2026

5 half day face to face '**community**' **workshops** to ground-truth expert views community workshops 1 in each local authority area
Dates confirmed
 Blaenau Gwent 20/1
 Caerphilly 27/1
 Monmouthshire 21/1
 Newport 15/1
 Torfaen 22/1

5 Deep –dive case study workshops
 (places; interests; issues; people with affected parties
 (face to face or online tbd)
Dates confirmed
 Feb 3, 4, 5, 10, 11



Xleap input

Discussion